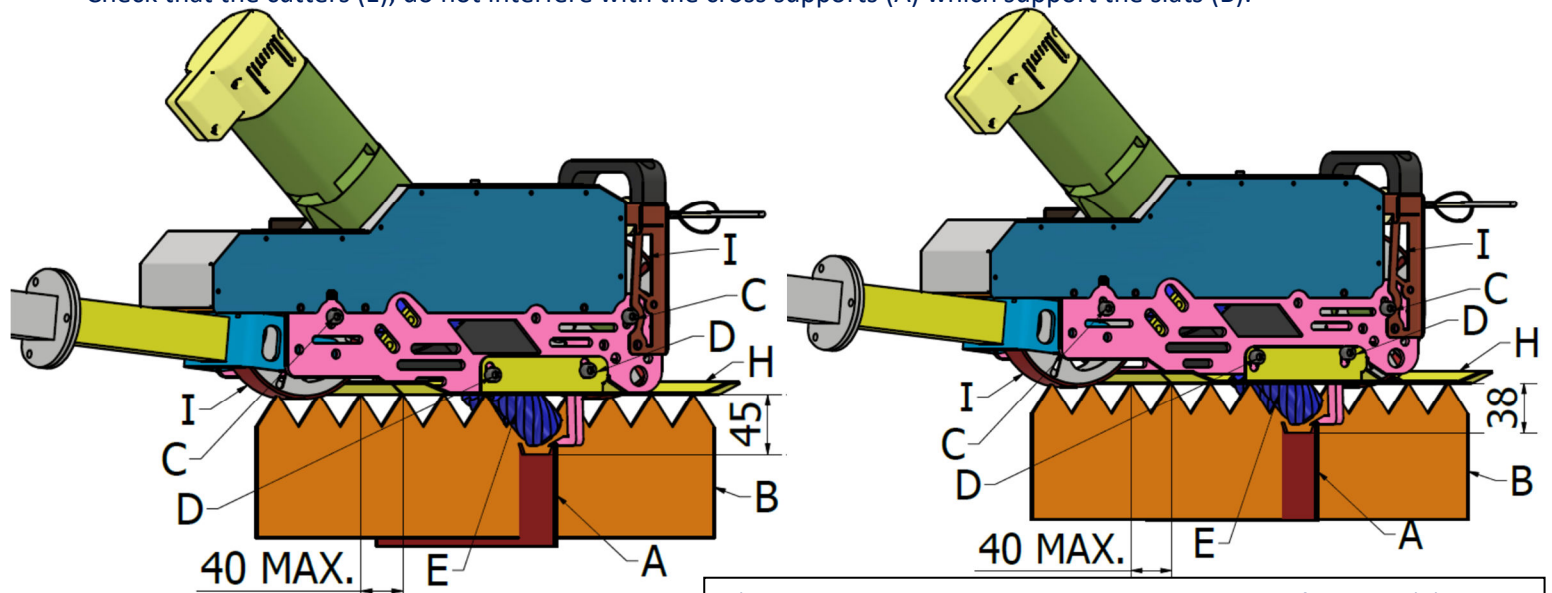


2 Basic rules for using the machine

WARNING Failure to follow these instructions will void any warranty

1 = To avoid damaging the cutter shafts (E), the machine can be set to 2 different working heights.

Check that the cutters (E), do not interfere with the cross supports (A) which support the slats (B).

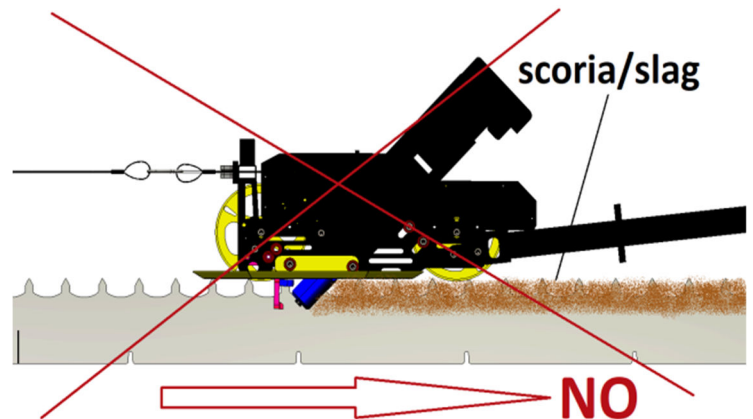
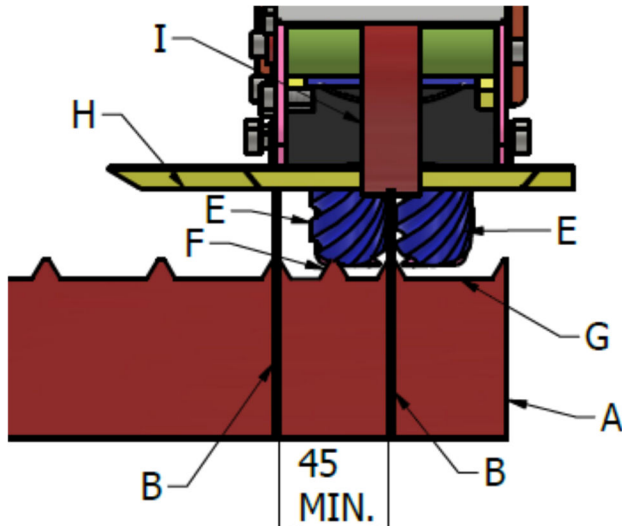


1) **Standard** level H 45, the distance between the tips of the slats (B) and the support of the slats (A) must be at least H45mm (1.77").

2) **Special** level H 38, the distance between the tips of the slats (B) and the support of the slats (A) must be at least H38mm (1-1/2"):

HOW TO CHAGE THE HEIGHT OF THE MACHINE.

- Loosen the 4 screws (D) then lower the plate (H) all the way down.
- Lower the wheels (I) by positioning the screws (C) in the lowest slot.

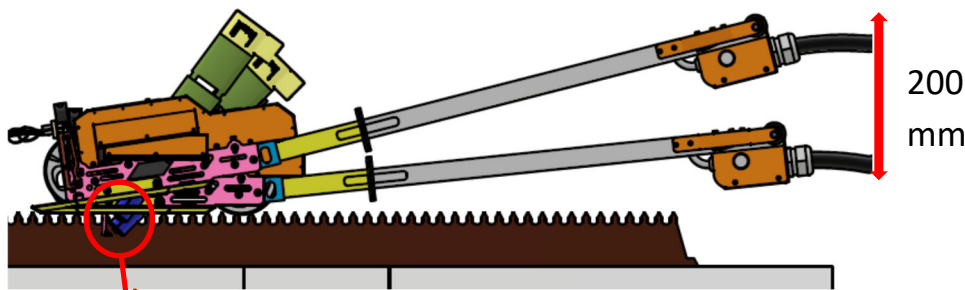


3) **WARNING**

- The minimum distance between the slats (B) must be 45 mm (1.77").
- It is **necessary** that the support of the slats (A) in correspondence with the plane (G), is free of any protrusions (F) which might hit the cutters.
- On a free surface (G) the cutters will easily remove the deposited slag.

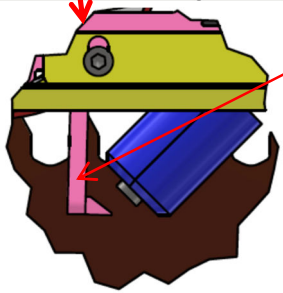
4) **AVOID** cleaning the slats backwards:

- by doing so the slag is collected between the cutters (E) which consequently are pushed outwards and possibly breaking the shafts where the cutters are mounted.



5) In case of very dirty slats, move the handle, with a vertical movement. Traction applies a constant pulling force. **DO NOT HIT:** IT COULD BREAK THE SHAFTS OF THE CUTTERS.

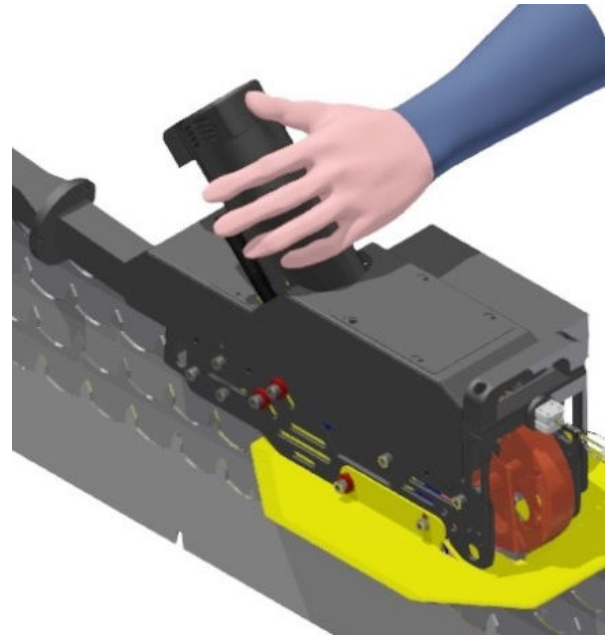
6) If the inserts collide with the slag, it is possible to remove them, IN THIS CASE THE MACHINE MUST BE INSERTED IN THE NEXT SLAT WITH THE MOTOR OFF, **but WARNING: THE DANGER INCREASES,**



2 = Overheating

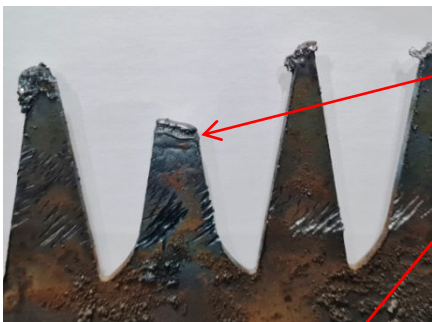
Keep the motor running while going backwards on the just cleaned slat to allow the motor to cool down.

ATTENTION in case of prolonged use, check the motor temperature by carefully touching the motor with of your fingers. The temperature must be such that you can keep your hand on the motor without getting burned. If not, run the motor idle until it cools down.



Come costruire le griglie per avere una massima durata e un banco sempre planare.

How to build grids for maximum durability and an always planarity bench.



Grids with long and narrow tips are not recommended, because they can be more easily damaged by the laser beam.

We recommend teeth with large possible base (see drawing), so that the heat is absorbed by the greatest possible surface of the material.

In this way, even if the tip is cut, it will keep its shape, guaranteeing a planar support of the metal sheets.

